



Case Study:

Air France Industries KLM Engineering & Maintenance

As a part of the AIR FRANCE KLM Group the company maintains, repairs and overhauls airframes, aircraft components and engines.

Company and Business Model

Air France Industries KLM Engineering & Maintenance is one of the three businesses of AIR FRANCE KLM Group. With a workforce of approx. 14,000 employees the Air France Industries KLM Engineering & Maintenance operates at different leading-edge engineering facilities at different locations such as Amsterdam-Schiphol, Paris Orly or Toulouse. In order to take up the technological challenges of the future, the employees are put through demanding apprenticeship and training cycles. To stay a flagship player in the global marketplace and bolstering the competitive advantage, the company has a large-scale of technical and human resources.

Products

The range of products for the companies business reaches from airframes to engines of Airbus, Boeing as well as regional Aircraft (e.g. Bombardier, Embraer)



Remanufacturing Process

In this case, the remanufacturing process is termed as "Overhaul".

The process steps are ranging from the disassembly to the repair of components and the reassembly which is followed by various validation tests.

The single process steps are carried out by experts in accordance with proven processes.



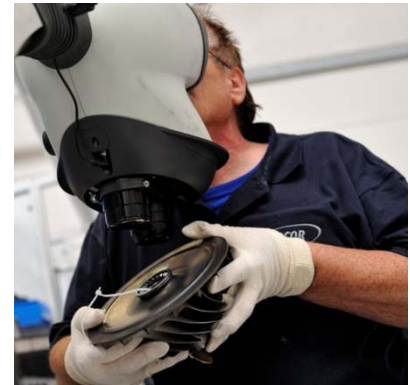
Air France Industries KLM Engineering & Maintenance is able to provide individual modules repairs alongside the full overhaul services.

Unique Characteristic

Air France Industries KLM Engineering & Maintenance has gained a combined experience due to approx. 11,000 completed engine shop visits as well as continuous technological development on all aircraft maintenance segments. Due to the rely on privilege relations with the manufacturers, the company constantly develops new, more efficient and cost-effective processes. Customers can benefit from price optimized top-quality services.

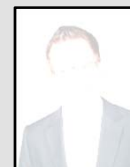


Furthermore, the company covers a high number of various approval and certifications such as ISO 9001, EN 9100, FAR 145 and much more.



Contact

**Air France Industries
KLM Engineering &
Maintenance**



mail.press@afiklmem.com

Contact Fraunhofer



Steffen Butzer

Phone +49 (0) 921 / 78516-420

Fax +49 (0) 921 / 55-7305

steffen.butzer@uni-bayreuth.de

